

Survival Hints

The key to survival situations is to adapt to the environment and improvise. In survival snaring situations remember these things;

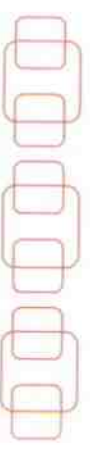
- More is better. Snares are inexpensive and lightweight; there is no excuse to run out of snares.
- Small animals are very sporadic and tougher to catch than furbearers, **STAY PATIENT.**
- Check your snares on a regular basis, some animals will chew off a foot if caught and not found for a while.
- Anchor snares properly. Make sure the snare is secured to a tree, stake or brush; otherwise you might lose your lunch!
- Practice makes perfect. Set a few snares in the backyard before any excursions to learn what works and what doesn't.
- Stealth black snares work the best because they are less noticeable than galvanized cable. The right equipment makes a world of difference



The Snare Shop

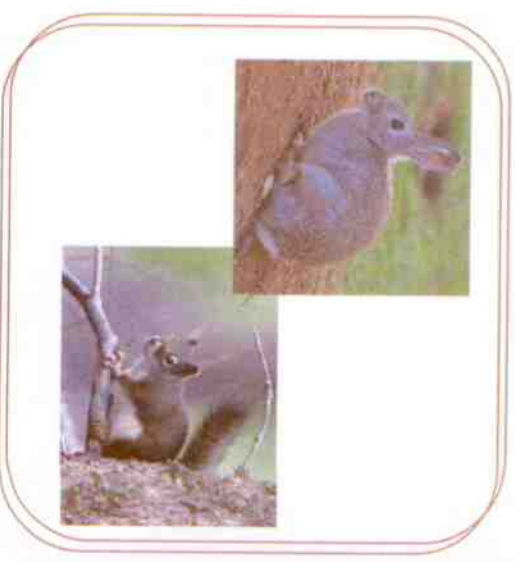
E-mail: sshop@snareshop.com
www.snareshop.com

The Snare Shop



Snaring Small Game & Survival Snaring

A Basic Guide



sshop@snareshop.com
www.snareshop.com

Get to know your surroundings

In any snaring situation you must first determine what animals are in the area. Look for tracks, droppings and visible dens.

Rabbits usually live under heavy brush, or in dens known as warrens. Rabbits are social animals and many rabbits will live in a connected warren. Rabbits are mainly nocturnal and are most commonly seen at dusk and dawn. They have many enemies and feed on vegetation close to the den. They are very alert and always on the look out for danger.

Squirrels are most active in the mornings and mid-afternoon. They spend the rest of the day resting in their nests that they make in hollowed out trees. These nests provide them with shelter from the elements and predators. They feed on nuts, fruit, tree buds and field corn. Squirrels will store food for winter by burring it 2" - 3" underground, then digging it up when it is needed finding it by scent alone.

Groundhogs, also known as woodchucks, burrow out dens made of many chambers. They hibernate through the winter and emerge in late February and March.



Groundhog in den



Rabbit on Trail

Getting Started

Always be conscious of where you are stepping, and what you are leaving in your wake. It is a good idea to wear gloves to keep your scent completely covered. Don't walk in the trail; the slightest disturbance might detour the animal from following the trail further.

Setting Your Snares

Rabbits

Loop Size ... 4" Diameter

Height ... 2" Off the ground

Find a place in the trail where it narrows down, maybe between two trees, from short to tall grass, at a warren entrance, etc. Stake your snare out of the trail so when the rabbit is caught they don't destroy the trail too much. Open your loop up to the recommended diameter and butt the support collar against the lock, and then attach the support collar to the support wire by twisting on to the left. Some snares come with wire attached and can be anchored directly to a stake or sapling. If wire is unavailable, or your snares don't have a support collar use a twig to support the snare in the air. Adjust the height of the bottom of the snare to about 2" high and place in the center of the trail. Take a step back and make sure the trail hasn't been disturbed, if it has "fluff" the grass back up making a definite trail again, or use brush or sticks to define the trail.

Squirrel

Loop Size ... 3" Diameter

Height ... 2" - 3" Off the Ground

Set your trail snares in the same manner as your rabbit snares; make adjustments to the loop size and height off the ground. You can also set up a squirrel pole, which consists of several snares set on a pole/branch, then leaned against a tree that is known to have squirrels in it. (See Picture) When the squirrels are caught running up the pole they fall off, to a quick death.

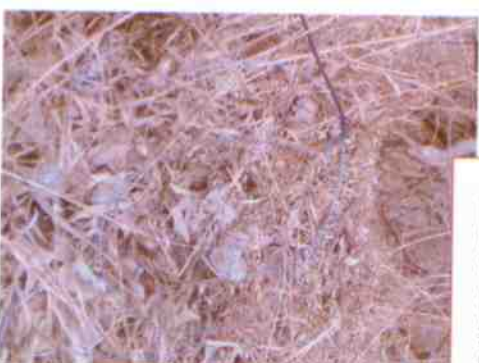
Groundhog - Woodchuck

Loop Size ... 5" - 6" Diameter

Height ... 2" Off the ground

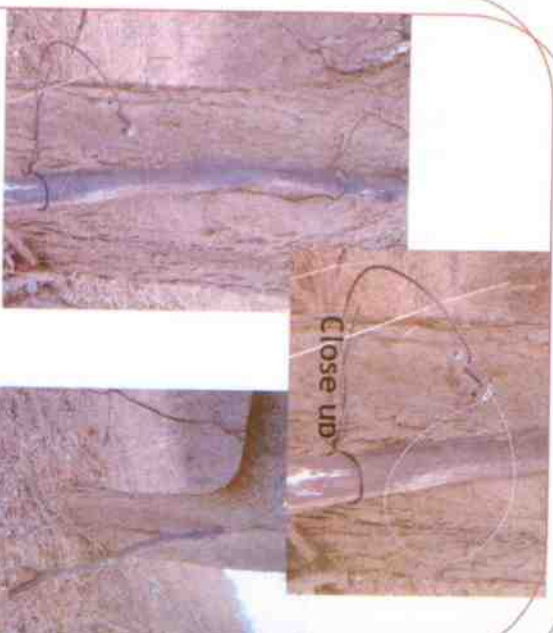
Set your trail snares in the same manner as your rabbit snares; make adjustments to the loop size and height off the ground. Groundhogs are easiest to catch coming in and out of their dens. Also remember that groundhogs hibernate.

Rabbit Snare



Snare set in trail for rabbit. Staked out of the trail and placed in the center of the trail, with the bottom of the loop about 2" off the ground.

This is our Mink/Squirrel Snare (SNARE512), supported by #11 wire and staked with 15" rebar stake.



Close up

Above is a squirrel pole. There are many snares set going up the branch that is leaned against a tree squirrels inhabit. When the squirrels run up the branch, they will get caught in the snare and fall off the pole to a quick death. Make sure that the snares cannot touch each other when fully closed and make sure the pole is secure and doesn't roll over allowing the squirrels to escape from the snare.